



# Residential

Division Profile





## WELCOME TO metrica RESIDENTIAL

metrica Residential is the German outfitter of residential interiors in the high-end luxury segment. In the ranking of Germany's most established world market leaders, metrica comes 14th.

Our history dates back to the year 1681. The name metrica has always been linked to the work of excellent craftsmen who have an eye to their customers' requirements and ideas.

metrica Residential specializes in not merely meeting the most exclusive and individual wishes of its clients from all over the world, but in exceeding them.

All our residential, office, hotel and shop project services are offered as a turn-key solution from single source, regardless of whether we take responsibility for the entire project as general contractor or whether we provide our know-how as specialist to individual trades.

Thanks to our strong, long-standing partnerships, we offer stability and reliability, even when working to tight deadlines.

Close cooperation between the client, the designer, metrica Residential and all contracting partners is a key factor in our projects' success.

All our core services are based on approved and modern processes that guarantee a high level of client satisfaction.

Emphasizing team spirit, diligence and clarity we strive to find what we call Your Way to Perfection.

## SERVICES



With more than 100 skilled cabinet makers employed in our two workshops it is pretty obvious that specialist joinery is our core competence.

Being focused on engineering, manufacturing and installation of highly customized furniture on super yachts as well as in luxury land-based projects we do however feel honored to be asked by our clients from time to time to take the overall responsibility in their construction project.

Our project management teams find these occasional experiences extremely helpful and our clients do benefit from our wide-angled and open minded project approach – no matter if we are appointed “solely” as specialist joinery subcontractor in their project.

Driven by our yachting division’s high degree of prefabrication we endeavour to establish the same in our residential projects.

Needless to say that our discerning clients rightly expect an unrivalled high-end quality level no matter what the project task may be.

In all of our projects there is a team with a project manager, technical designer(s) or engineer(s) and draughtsmen - looking forward to finding new solutions for the varying challenges and requirements of top-level design concepts.

We find these challenges mainly in luxury residential projects but also fit-out private offices, selected boutique hotels and luxury shops.





## CAPABILITIES | STRENGTHS COMPANY STATEMENT

metrica Residential adheres closely to DIN ISO 9001 and 14001 standards and deploys high-quality project managers in order to successfully bring together all parties involved in a project. We employ handpicked teams of professionals.

We understand that our business is our people and support our employees' professional development by means of training programmes conducted by reputable third parties.

metrica Residential maintains an in-house engineering department and two production facilities to fulfil the task of delivering successful projects.

We have excellent links to international designers who can be seamlessly integrated in our team.

Working as a team is key to our success. Our up-to-date system knowledge and proven project management experience, together with the employment of local and international experts, underpins our success.

### **On Schedule**

Reliability is our top priority. We realize your ideas uncompromisingly - always meeting your deadline.

### **On Budget**

Open communication is the basis for successfully realizing projects.

Our customers are not only clients - they are partners. Our partners' budget is our benchmark - we meet it.

### **High Quality**

We define the highest requirements and achieve ultimate goals.

Our team has solved the most complex of tasks and has wide-ranging experience and know-how.

We appreciate the particular and value quality - just like you.



## INVOLVED IN ALL PROJECT STAGES



1

### Preparation

#### Appraisal

Identification of clients' constraints and objectives. Preparation of feasibility studies.

Creation of design brief based on initial statement of requirements.

#### Design brief

Confirmation of key requirements and constraints. Determination of procurement method, procedures, organisational structure and project team.

2

### Design

#### Concept

Implementation of design brief. Preparation of concept design including outline proposal for structural and building services systems and outline specification. Preparation of preliminary cost plan.

#### Design development

Development of concept design to incl. structural and building services system update outline specification and cost plan.

Completion of project brief and application for detailed planning permission.



## INVOLVED IN ALL PROJECT STAGES



3

### Pre-Construction

#### Technical design

Preparation of technical design(s) and specifications to coordinate components. Preparation of information on statutory regulations and construction safety.

#### Product information

Preparation of production information in sufficient detail to enable a tender or tenders to be issued. Application for building regulations approval. Preparation of further information for construction required under the building contract.



4

### Construction

#### Mobilisation

Issuing the building contract, appointing the contractor. Issuing of information to the contractor. Arranging site hand over to the contractor.

#### Construction to completion

Administration of the building contract to practical completion. Provision to the contractor of further information as and when reasonably required. Review of information provided by contractors and specialists.



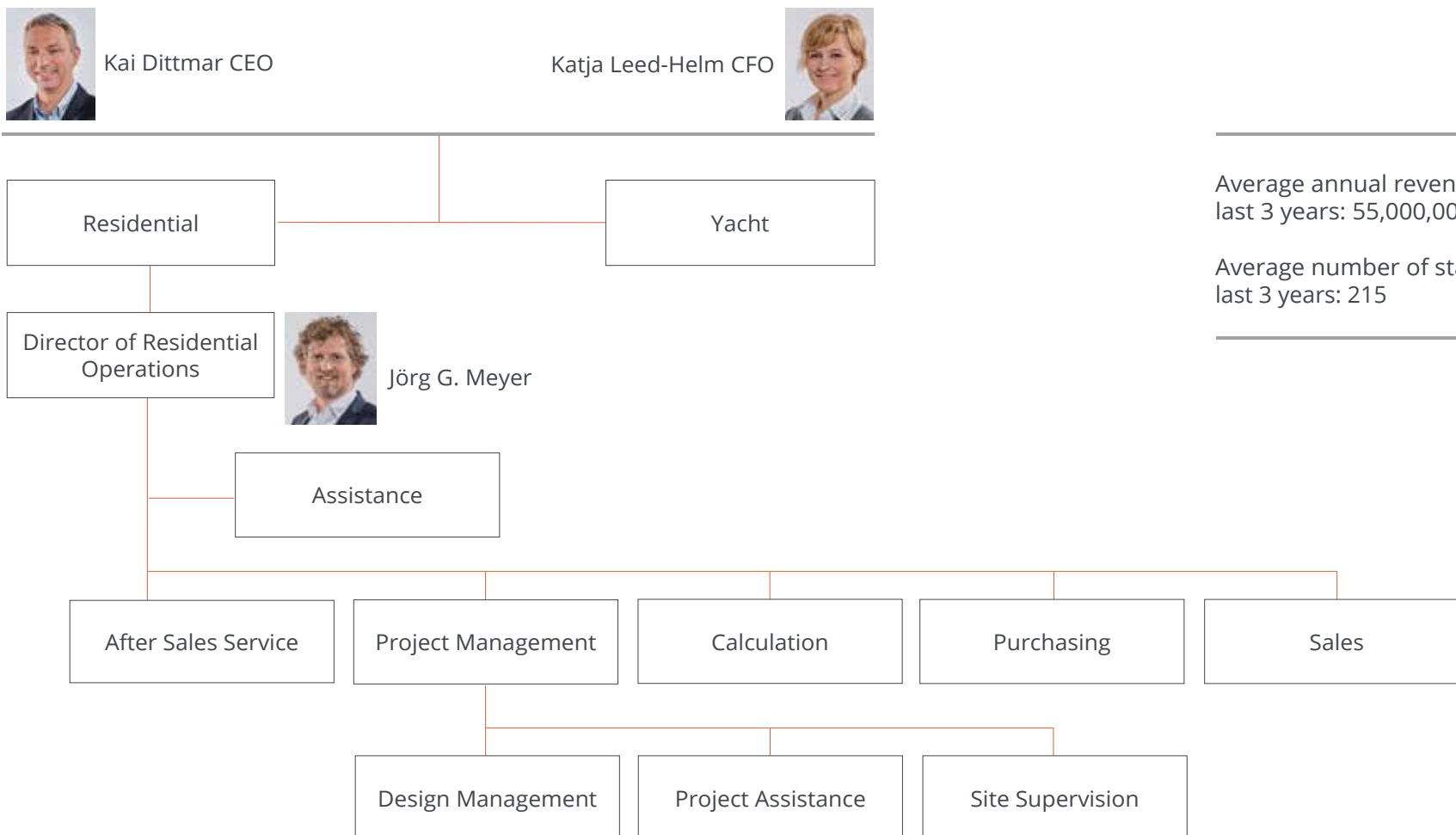
5

### Use

#### Post practical completion

Administration of the building contract after practical completion and final inspections. Assisting building user during initial occupation period. Review of project performance in use.

# COMPANY STRUCTURE




---

Average annual revenues last 3 years: 55,000,000 €

Average number of staff last 3 years: 215

---





## FACILITIES



**Senden Headquarters | 13,603 sqm**  
Bahnhofstr. 73  
48308 Senden  
Germany



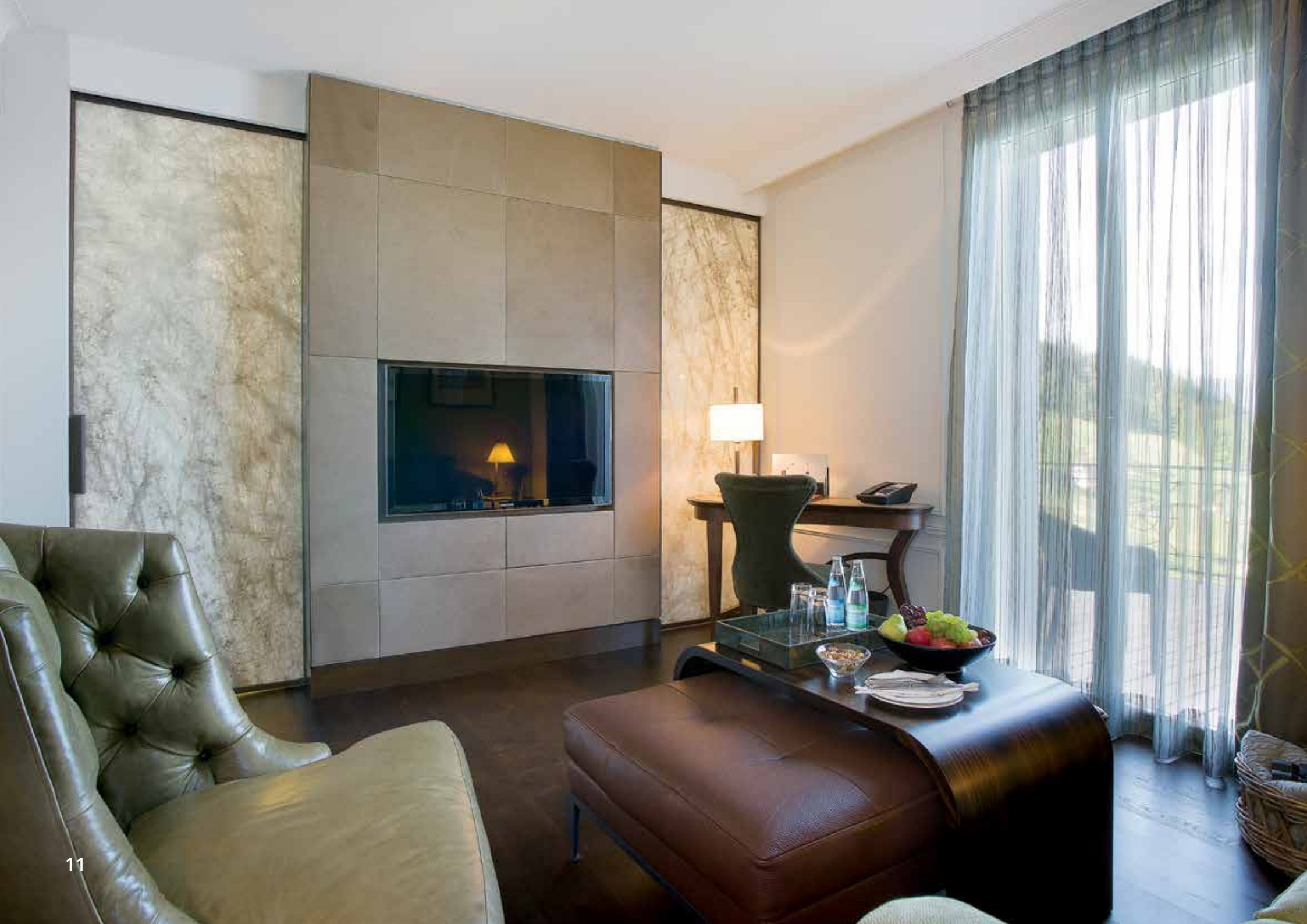
**Holtwick Facility | 10,758 sqm**  
Schulweg 23  
48720 Rosendahl | Holtwick  
Germany

metrica RESIDENTIAL

Relentlessly pursuing perfection - whenever, wherever











ORO  
PURO











## YOUR WAY TO PERFECTION

### **Our Business (What we do)**

metrica realizes luxury projects on water and on land. According to customer requirements we act as General Contractor, Interior contractor or produce exclusive loose furniture.

### **Our Conviction (What we want/strive for)**

Luxury projects enthuse. It is a difficult way to get there.

### **Our Mission (What we give)**

The way to a perfect result – we find it and go it together with our customer. This means for our customer: First security on the way and then enthusiasm about the result.

### **Our Values**

Team spirit - Diligence - Clarity.



## TESTIMONIALS | RESIDENTIAL

„I am an owner's representative on the project in Atherton California at which metrica has been installing interiors. I wanted to express my great pleasure in working with your company over the past few months. The quality of the interior fittings surpasses any work I've seen in my many years in high end residential construction. But as fine as the end product was, I'm even more impressed by the quality of the process.“

Steven Cohen, Project 5, Construction Management, California

„ In my opinion metrica INTERIOR are amongst the finest joinery contractors in the world. Their attention to detail helped us complete our most perfect project of the last 30 years . They were the perfect partner.“

Maurice O'Connell, Chairman - Delcon Construction Ltd, London

„I can't imagine making a project somewhere in the world without Metrica, just because they are the best, but please don't tell anyone since I want to keep them only for my clients who expect the best quality.“

Rémi Tessier, Rémi Tessier Design, Paris

„It is a pleasure to work with Metrica as the people are pro active,the process is clear and the result is excellent!“

Rob Wetzels, Wetzels Brown Partners, Amsterdam





## TESTIMONIALS | RESIDENTIAL | References (Extract)



**Villa** – 1,200 m<sup>2</sup>  
Germany  
General contractor-interior outfit

**Palace** – 1,800 m<sup>2</sup>  
Turkey  
Interior outfit

**Jeweller** – 160 m<sup>2</sup>  
Switzerland  
General contractor-interior outfit

**Penthouse** – 400 m<sup>2</sup>  
Germany  
General contractor-interior outfit

**Penthouse** – 500 m<sup>2</sup>  
United Kingdom  
General contractor

**Private office** – 300 m<sup>2</sup>  
United Kingdom  
Interior outfit

**Chalet** – 1,200 m<sup>2</sup>  
Switzerland  
General contractor

**Jeweller** – 250 m<sup>2</sup>  
Switzerland  
General contractor- interior outfit

**Villa** – 3,500 m<sup>2</sup>  
Mallorca  
General contractor

**Villa** – 3,500 m<sup>2</sup>  
Greece  
Interior outfit

**Jeweller** – 90 m<sup>2</sup>  
Switzerland  
General contractor-interior outfit

**Villa** – 700 m<sup>2</sup>  
Switzerland  
Interior outfit

**5 Star Superior Hotel** – 3,000 m<sup>2</sup>  
Switzerland  
Interior outfit

**2 Chalets** – 3,500 m<sup>2</sup>  
French Alps  
General contractor

**Private residence** – 450 m<sup>2</sup>  
Russia  
Interior outfit

**Penthouse** – 550 m<sup>2</sup>  
United Kingdom  
Interior outfit



## TESTIMONIALS | RESIDENTIAL | References (Extract)



**Villa – 750 m<sup>2</sup>**  
Greece  
General contractor

**Villa – 800 m<sup>2</sup>**  
South of France  
Interior outfit

**Jeweller – 320 m<sup>2</sup>**  
Switzerland  
General contractor- interior outfit

**Lofts and Offices – 800 m<sup>2</sup>**  
Germany  
Interior outfit

**Villa – 670 m<sup>2</sup>**  
Germany  
Interior outfit

**Chalet – 380 m<sup>2</sup>**  
Switzerland  
Interior outfit



## TESTIMONIALS | YACHT



Refitted Yachts  
 MY Aquila  
 Redman Whiteley Dixon / Susan Young  
 Derektor  
*World Superyacht Awards 2017*



Displacement Motor Yachts  
 1,500 GT and above  
 MY CLOUDBREAK  
 Christian Liaigre Design  
 Abeking & Rasmussen  
*World Superyacht Awards 2017*



Motor Yacht of the Year  
 Displacement Motor Yacht  
 of 1300 GT to 2999 GT of below 75 m  
 MY GRACE E  
 Rémi Tessier Design / Picchiotti  
 Perini Navi Group  
*World Superyacht Awards 2015*



Environmental Protection Award  
 Exterior Design Award / Interior Design  
 Award  
 Motor Yachts above 500 GT  
 MY GRACE E  
 Rémi Tessier Design / Picchiotti  
 Perini Navi Group  
*ShowBoats Design Awards 2015*



Displacement Motor Yachts  
 (approximately 60 m+)  
 MY MOGAMBO  
 Reymond Langton Design  
 Nobiskrug  
*World Superyacht Awards 2013*



Interior Design Award  
 Displacement Motor Yachts 60m+  
 MY MUSASHI  
 Sinot Yacht Design  
 Feadship  
*ShowBoats Design Awards 2012*





## TESTIMONIALS | YACHT



Interior Design Award  
Sailing Yachts  
SY HEMISPHERE  
Michael Leach Design  
Pendennis  
*ShowBoats Design Awards 2012*



Best Interior Design  
Motor Yacht  
MY AL MIRQAB  
Andrew Winch Design  
Kusch Yacht Bau  
*World Superyacht Awards 2009*



Interior Design Award  
Displacement Motor Yachts 200'+  
MY PALLADIUM  
Michael Leach Design  
Blohm & Voss  
*ShowBoats Design Awards 2011*



Best Displacement Motor Yacht  
Of Below 500gt  
MY ELANDESS  
Bannenberg & Rowell Design  
Heesen  
*World Superyacht Awards 2009*



Best Displacement  
Motor Yacht Below 500gt  
MY BLIND DATE  
Keech Green Design  
Heesen  
*World Superyacht Awards 2010*

Outstanding Achievement  
in Motor Yachts  
MY LADY ANNE  
Franchini Design  
Amels  
*ShowBoats International Award 2006*





**Headquarters Senden**

metrica GmbH & Co. KG  
Bahnhofstr. 73  
48308 Senden  
Germany

Phone +49 2536 3309-00  
Fax +49 2536 3309-19  
info@metrica.de  
www.metrica.com

**Location USA**

metrica Inc.  
57 Old Post Road 2  
Suite 204  
Greenwich, CT 06830  
USA

Phone +1 203 769 1999  
mantione@metrica.com  
www.metrica.com

your way to perfection

